

# S-5!®

The Right Way!

The right way to attach almost anything to metal roofs!

## Installation Instructions

**S-5!® Warning!** Please use these products responsibly! Visit our website or contact your S-5! distributor for available load test results. The user and/or installer of these parts is responsible for all necessary engineering and design to ensure the RibBracket has been properly spaced and configured and the proper fasteners or rivets have been selected for your specific application.

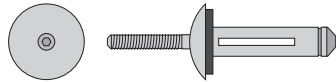
**Notice to S-5! users:** Specific layout and assembly schematics for S-5! products are the responsibility of the user or project designer. Due to the many variables involved with specific panel products, climates, snow melt phenomena, and job particulars, the manufacturer cannot and does not express any opinions as to the suitability of any S-5! assembly for any specific application and assumes no liability with respect thereto. This document is an installation guide only and the photographs and drawings herein are for the purpose of illustrating installation, tools and techniques, not system designs. Information contained within is intended to apply to the document as a whole.

## Tools Needed

- Screw Gun\*
- Rag
- String Line
- Tape Measure

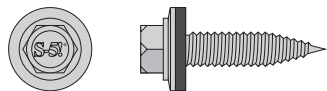
**\*For time saving tool recommendations contact S-5!**

RibBracket is mounted directly onto the crown of the trapezoidal sheet using the Bi-metal stainless steel screws (**provided**) or Bulb-Tite rivets (**not provided**).



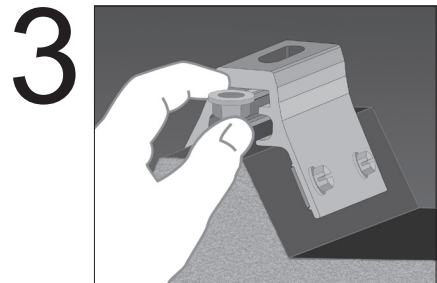
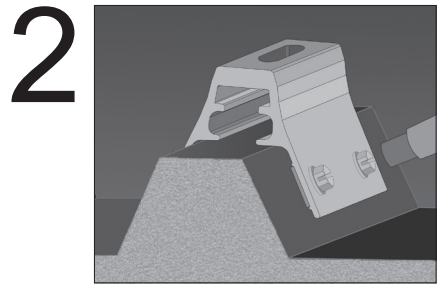
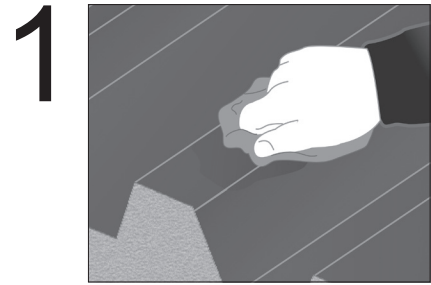
Not Provided

Rivet Specifications:  
9/32" (7.7mm) Diameter - Alu/Alu Flat Head  
Bulb-Tite Rivet with 5/8" (16mm) EPDM Washer  
Grip: 0.032" / 0.8mm - 9.5mm



Provided

Screw Specifications:  
1/4" (6.3mm) Diameter - 1" (25mm) Length - Stainless Steel Self-Tapping Screw  
with Hardened Steel Piercing Point - 5/16" (8mm) Hex Head - 5/8" (16mm)  
Stainless Steel/EPDM Sealing Washer



## RibBracket™ Placement Tips

To ensure brackets are installed in a straight line, install a single RibBracket on each end of the roof at a measured, consistent distance from the bottom edge or ridge of the roof. Use a string line between the two brackets. Mount the remaining RibBrackets along the string line, directly into the roof. Do not remove the EPDM rubber gasket; this is for weather-proofing. For upslope bracket placement techniques reference the S-5! website at [www.S-5.com](http://www.S-5.com).

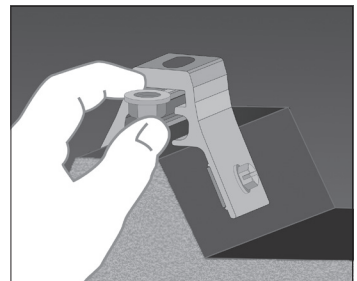
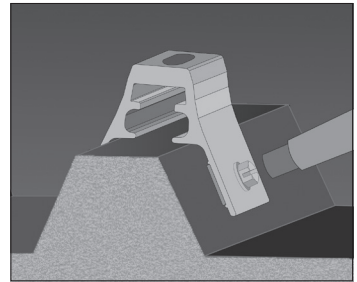
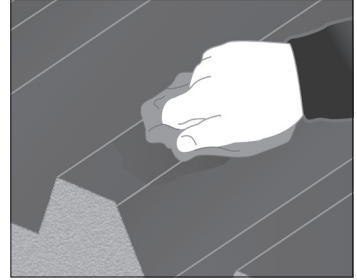
## To Install RibBracket™

1. The only surface preparation necessary is to simply wipe away excess oil and debris.
2. Secure the RibBracket directly into the crown of the roof profile by driving the included fasteners into the four pre-punched holes, or pre-drilling the proper-sized hole through the four pre-punched holes and riveting with bulb-type rivets (as per rivet manufacturers installation instructions). To achieve tested holding strength, secure the RibBracket by using all four pre-punched hole locations. Drive the fastener in until it is tight and the washer is firmly seated. Do not over-drive fasteners; a slight extrusion of rubber around the washer is a good visual-tightness check. If a fastener has been over-driven, it is important to remove the fastener and replace it with a bulb rivet or larger diameter fastener. To avoid stripping, use screw gun with depth-sensing nose piece or adjustable torque clutch.
3. From either end of the RibBracket, slide the included M8-1.25 hex flange nut (flange side up) into the top groove. The RibBracket is now ready to install ancillaries by using a standard M8 bolt through the slotted top thru-hole and the previously inserted hex flange nut. For critical attachment applications utilizing an M8-1.25 X 16 mm Hex Flange Bolt, tighten the M8 bolt to 160 inch pounds (13 foot pounds).

These instructions are for use by those experienced in the trade. Always follow appropriate safety precautions and use appropriate tools.

### To Install RibBracket™ Mini

1. The only surface preparation necessary is to simply wipe away excess oil and debris.
2. Secure the RibBracket™ Mini directly into the crown of the roof profile by driving the included fasteners into the pre-punched holes, or pre-drilling the proper-sized hole through the pre-punched holes and riveting with bulb-type rivets (as per rivet manufacturers installation instructions). Drive the fastener in until it is tight and the washer is firmly seated. Do not over-drive fasteners; a slight extrusion of rubber around the washer is a good visual-tightness check. If a fastener has been over-driven, it is important to remove the fastener and replace it with a bulb rivet or larger diameter fastener. To avoid stripping, use screw gun with depth-sensing nose piece or adjustable torque clutch.
3. From either end of the RibBracket Mini, slide the included M8-1.25 hex flange nut (flange side up) into the top groove. The RibBracket Mini is now ready to install the S-5-PV Kit by insertion of the the PV stud, or other ancillaries by using a standard M8 bolt through the slotted top thru-hole and the previously inserted hex flange nut. For critical attachment applications utilizing an M8-1.25 X 16 mm Hex Flange Bolt, tighten the M8 bolt to 160 inch pounds (13 foot pounds).



#### **S-5!® Warning! Please use this product responsibly!**

Products are protected by multiple U.S. and foreign patents. For published data regarding holding strength, fastener torque, patents and trademarks, visit the S-5! website at [www.S-5.com](http://www.S-5.com). Copyright 2014, Metal Roof Innovations, Ltd. S-5! products are patent protected. S-5! aggressively protects its patents, trademarks, and copyrights. Version 092614.